



# Centurion Key Information



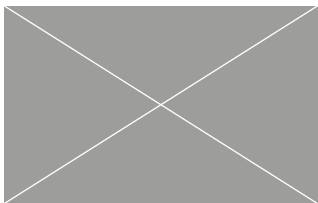
Overall Length	385mm
Hanging Length	368mm
Overall Width	230mm
Cover Width	200mm
Mass (approx.)	2.85kg

### Colours

- Grey
- Brown
- Autumn
- Red

	Pitch	Batten Spacing	Headlap	Tiles Per m <sup>2</sup>	Batten Per m <sup>2</sup>	Mass Per m <sup>2</sup>	Nail Size
Centurion	10°-44°	285mm max	100mm min	17.54/m <sup>2</sup>	3.51ln	50.88kg	Tile clip
		275mm min	110mm max	18.18/m <sup>2</sup>	3.64lm	52.73kg	50mm x 3.35mm

## Verge System



Standard Centurion Tiles can be cut on site to achieve the same verge tiles. Installed with verge clips Mortar Bedded Only

## Ridge System



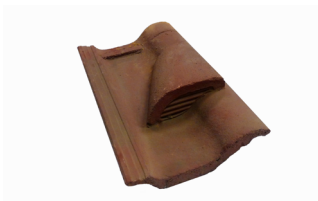
Coverage: 3m Pack  
Use With: Half Round or Uni Angle Ridge (NH)  
5000mm<sup>2</sup>/linear metre free vent area  
Pitch Limits: 12.5° - 44°

## Tile Clips



Packs of 100  
Tile clip nails into batten  
Fit with nail  
Made from Plastic

## Vent Tiles



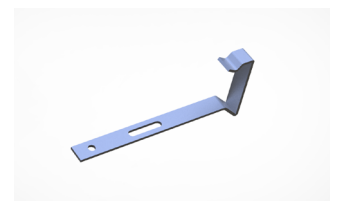
Made from concrete  
Air Vent - Vent Tile Only  
Soil Vent - Vent Tile, 100mm flexi pipe  
7860mm<sup>2</sup> Free Vent Area  
Pitch Limits: 15° - 44°

## Hip System



Coverage: 6m Pack  
Use With: Third Round or Uni Angle Hips (NH)  
Not Ventilated  
Pitch Limits: 12.5° - 55°

## Verge Clips



Packs of 50  
Nails to batten  
Fits on Verge Tile in the pan  
Use with mortar bedded verge  
Made from Stainless Steel





# Centurion Product Codes

## Tiles & Fittings

Description	Product Code
Centurion Tile	BUZ/7903/CE01/--
Centurion Double Tile	BUZ/7945/CE27/--

## Ancillary Products

Description	Product Code
Centurion Vented Ridge Pk (3m)	BUZ/7951/CST5/--
Vented HR Monoridge Pk (3m)	BUZ/7951/C6M5/--
PAN8/V2/Centurion Hip Pk (6m)	BUZ/7956/P8DH/00
Centurion Air Vent Kit	BUZ/7950/CE25/--
Centurion Soil Vent Kit (inc.flexipipe)	BUZ/7950/CE24/--
Eaves Vent Starter Pk (6m)	BUZ/7955/U5E5/00
Eaves Vent Extension Pk (6m)	BUZ/7955/U5E7/00
Vented Abutment Pk (3m)	BUZ/7951/CSA3/--
Centurion Tile Clips (Pk 100)	BUZ/7951/CS52/00
Centurion Verge Clips (Pk 50)	BUZ/7961/0053/00
Centurion Low Pitch Eaves Pk (3m)	BUZ/7951/CE50/00

## Suitable Ridge/Hip Tiles

Description	Product Code
Ridge Half Round (450mm)	BUZ/7935/0516/--
Ridge Half Round Nailhole (450mm)	BUZ/7935/D516/--
Ridge Half Round Block End (450mm)	BUZ/7940/D524/--
Ridge Universal Angle (450mm)	BUZ/7935/U516/--
Ridge Universal Angle Nailhole (450mm)	BUZ/7935/UD16--
Ridge Uni Angle Block End (450mm)	BUZ/7940/U524/--
Ridge Half Round Mono (450mm)	BUZ/7940/0300/--
Ridge HR Mono Block End LH (450mm)	BUZ/7940/0324/--
Ridge HR Mono Block End RH (450mm)	BUZ/7940/0325/--
Ridge Scrolltop Half Round (450mm)	BUZ/7940/HR30/--
Ridge Scrolltop HR Block End (450mm)	BUZ/7940/HR29/--
Ridge Half Round Baby (300mm)	BUZ/7940/0020/--
Ridge Angle Baby (300mm)	BUZ/7940/0019/--
Hip Third Round (450mm)	BUZ/7935/0566/--
Hip Third Round Nailhole (450mm)	BUZ/7935/D566/--
Hip Third Round Block End (450mm)	BUZ/7940/D526/--
Hip Universal Angle (450mm)	BUZ/7935/U566/--
Hip Universal Angle Nailhole (450mm)	BUZ/7935/UD66/--
Hip Uni Angle Block End (450mm)	BUZ/7940/U526/--

## Plain Tiles

Description	Product Code
Plain Tile	BUZ/7907/P501/--
Plain Tile & Half	BUZ/7945/P507/--
Plain Tile Eaves & Tops	BUZ/7945/P506/--
Beavertail Tile	BUZ/7930/BT01/--
Beavertail RH Tile & Half	BUZ/7945/BT08/--
Beavertail LH Tile & Half	BUZ/7945/BT07/--
Plain Tile Bonnet Hip	BUZ/7950/PT13/--
90 Deg LH Ext Angle	BUZ/7950/PT11/--
90 Deg RH Ext Angle	BUZ/7950/PT12/--
135 Deg LH Ext Angle	BUZ/7950/PT31/--
135 Deg RH Ext Angle	BUZ/7950/PT32/--

