

V2

Key Information



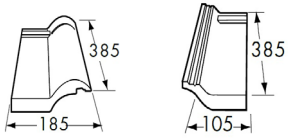
Overall Length	385mm
Hanging Length	360mm
Overall Width	230mm
Cover Width	200mm
Mass (approx.)	2.95kg (Smooth) 3kg (Sandfaced)

Colours

Grey
Brown
Autumn
Red
Sandfaced Brown

	Pitch	Batten Spacing	Headlap	Tiles Per m ²	Batten Per m ²	Mass Per m ²	Nail Size
V2 Smooth	17.5°-70°	310mm max	75mm min	16.13m ²	3.23lm	47.58kg	50mm x 3.35mm
		285mm min	100mm max	17.54/m ²	3.51lm	51.75kg	
V2 Sandfaced	22.5°-70°	310mm max	75mm min	16.13/m ²	3.23lm	47.58kg	50mm x 3.35mm
		285mm min	100mm max	17.54/m ²	3.51lm	51.75kg	

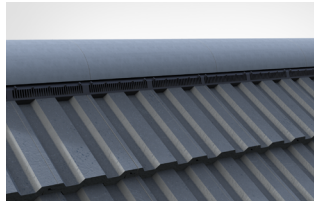
Verge System



LH Verge Tile RH Verge Tile

LH & RH Verge tiles
Installed with verge clips
Mortar bedded only

Ridge System



Coverage: 3m Pack
Use With: Half Round or Uni Angle Ridge (NH)
5000mm²/linear metre free vent area
Pitch Limits: 17.5° - 55° (Smooth)
22.5° - 55° (Sandfaced)

Tile Clips



Packs of 100
Made from Plastic
Nails to batten using
50x3.35mm nails (not supplied)

Vent Tiles



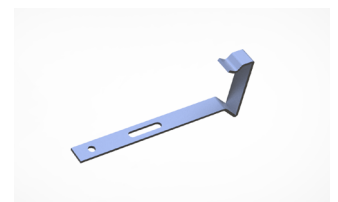
Air Vent - Vent Tile Only
Soil Vent - Vent Tile, 160mm flexi pipe
12275mm² Free Vent Area
Pitch Limits: 17.5° - 55° (Smooth)
22.5° - 55° (Sandfaced)

Hip System



Coverage: 6m Pack
Use With: Third Round or Uni Angle Hips (NH)
Not Ventilated
Pitch Limits: 25° - 55°

Verge Clips



Packs of 50
Nails to batten
Use with mortar bedded verge
Made from Stainless Steel

Forticrete

an IBSTOCK plc company