

# Hardrow

## Key Information



	18 x 12	18x 18	24 x 18
Overall Length	457mm	457mm	610mm
Hanging Length	407mm	407mm	460mm
Overall Width	305mm	457mm	457mm
Cover Width	311mm	464mm	468mm
Mass (approx.)	4.8kg	7.2kg	10.6kg

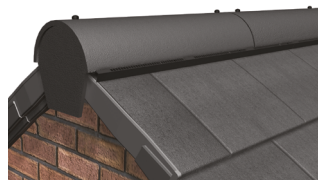
	Pitch	Batten Spacing	Headlap	Side lap	Tiles Per m <sup>2</sup>	Batten Per m <sup>2</sup>	Mass Per m <sup>2</sup>	Nail Size
18 x 12	25°+	191mm max	75mm min	95mm min	17.22/m <sup>2</sup>	5.24lm	83kg	40mm x 3.35mm
18 x 18	20°-24.5°	178mm max	102mm min	89mm min	12.3/m <sup>2</sup>	5.62lm	88kg	40mm x 3.35mm
	25°+	191mm max	75mm min	75mm min	11.5/m <sup>2</sup>	5.24lm	83kg	
24 x 18	17.5°-19.5°	241mm max	127mm min	121mm min	9.07/m <sup>2</sup>	4.15lm	96kg	40mm x 3.35mm
	20°-24.5°	255mm max	100mm min	102mm min	8.61/m <sup>2</sup>	3.92lm	91kg	
	25°+	267mm max	75mm min	107mm min	8.2/m <sup>2</sup>	3.75lm	87kg	

### Verge System



Format : Continuous Length  
 Coverage: 3m  
 Foam block, Straight connector,  
 Retaining clips included

### Ridge System



Coverage: 6m Pack  
 Use With: Hardrow Ridge Below 40°  
 Half Round or Uni Angle Ridge (NH) Above 40°  
 5000mm<sup>2</sup>/linear metre free vent area  
 Pitch Limits: 17.5° - 40°

### Ridge Angles

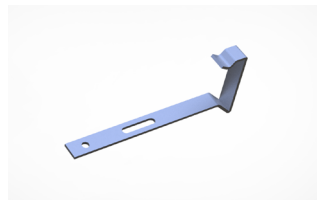
Roof Pitch	Ridge Angle Dry Fixed	Ridge Angle Mortar Bedded
17.5° to 20°	105°	140°
20.5° to 35°	90°	120°
35.5° to 40°	70°	105°
40.5° to 45°	LB NH Ridge	90°
45.5° to 55°	LB NH Ridge	70°

### Vent Tiles



Air Vent - Vent Tile Only  
 Soil Vent - Vent Tile, Adaptor,  
 100mm flexi pipe  
 7860mm<sup>2</sup> Free Vent Area  
 Pitch Limits: 17.5° - 55°

### Verge Clips



V2 Verge Clip Used  
 Packs of 50  
 Nails to batten  
 Use with mortar bedded verge  
 Made from Stainless Steel

**Tile Clips**  
 Nail Only

**Hip System**  
 Wet Bed Only