

Gemini

Key Information



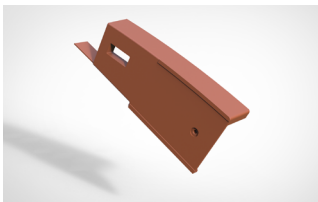
Overall Length	270mm
Hanging Length	243mm
Overall Width	337mm
Cover Width	316mm
Mass (approx.)	2.8kg

Colours

Grey
Brown
Red
Jacobean
Sunrise Blend
Mixed Russet
Mercia Blend (Sandfaced)
Ember Blend (Sandfaced)
Welsh Blue (Made to order)

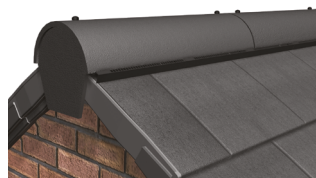
	Pitch	Batten Spacing	Headlap	Tiles Per m ²	Batten Per m ²	Mass Per m ²	Nail Size
Gemini Smooth	22.5°-29.5°	190mm max 175mm min	80mm min 95mm max	16.66/m ² 18.08/m ²	5.26lm 5.71lm	47.47kg 51.54kg	45mm x 3.35mm
	30°-70°	195mm max 175mm min	75mm min 95mm max	16.23/m ² 18.08/m ²	5.13lm 5.71lm	46.25kg 51.54kg	
Gemini Sandfaced	30-70mm	195mm max 175mm min	75mm min 95mm max	16.23/m ² 18.08/m ²	5.13lm 5.71lm	46.25kg 51.54kg	45mm x 3.35mm

Verge System



Format : Individual Units
Coverage: 2.6m - 2.9m
Left and Right Hand Packs Available
Starter / End Parts included
15 Units per pack

Ridge System



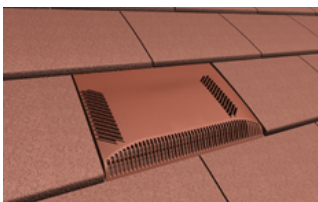
Coverage: 6m Pack
Use With: Half Round or Uni Angle Ridge (NH)
5000mm²/linear metre free vent area
Pitch Limits: 22.5° - 55°

Tile Clips



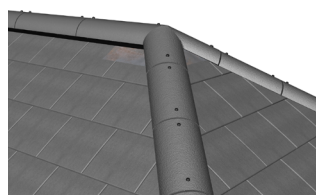
Packs of 100
Tile to Tile Clip
Made from Plastic

Vent Tiles



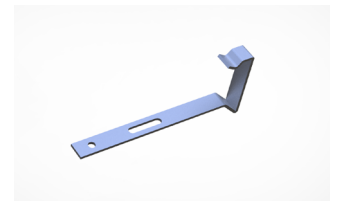
Air Vent - Vent Tile Only
Soil Vent - Vent Tile, 100mm flexi pipe
7860mm² Free Vent Area
Pitch Limits: 22.5° - 55°

Hip System



Coverage: 6m Pack
Use With: Third Round or Uni Angle Hips (NH)
Not Ventilated
Pitch Limits: 22.5° - 55°

Verge Clips



Packs of 50
Nails to batten
Use with mortar bedded verge
Made from Stainless Steel

Forticrete

an IBSTOCK plc company